

# Cranes of the Atherton Tablelands and the potential impact of wind infrastructure

Cranes play a key role in many Australian First Nations' cultures.



Cranes have huge global visibility at many cultural levels.



Brolga on Queensland Coat of Arms

# Australia's and the Atherton Tablelands' Two Crane Species

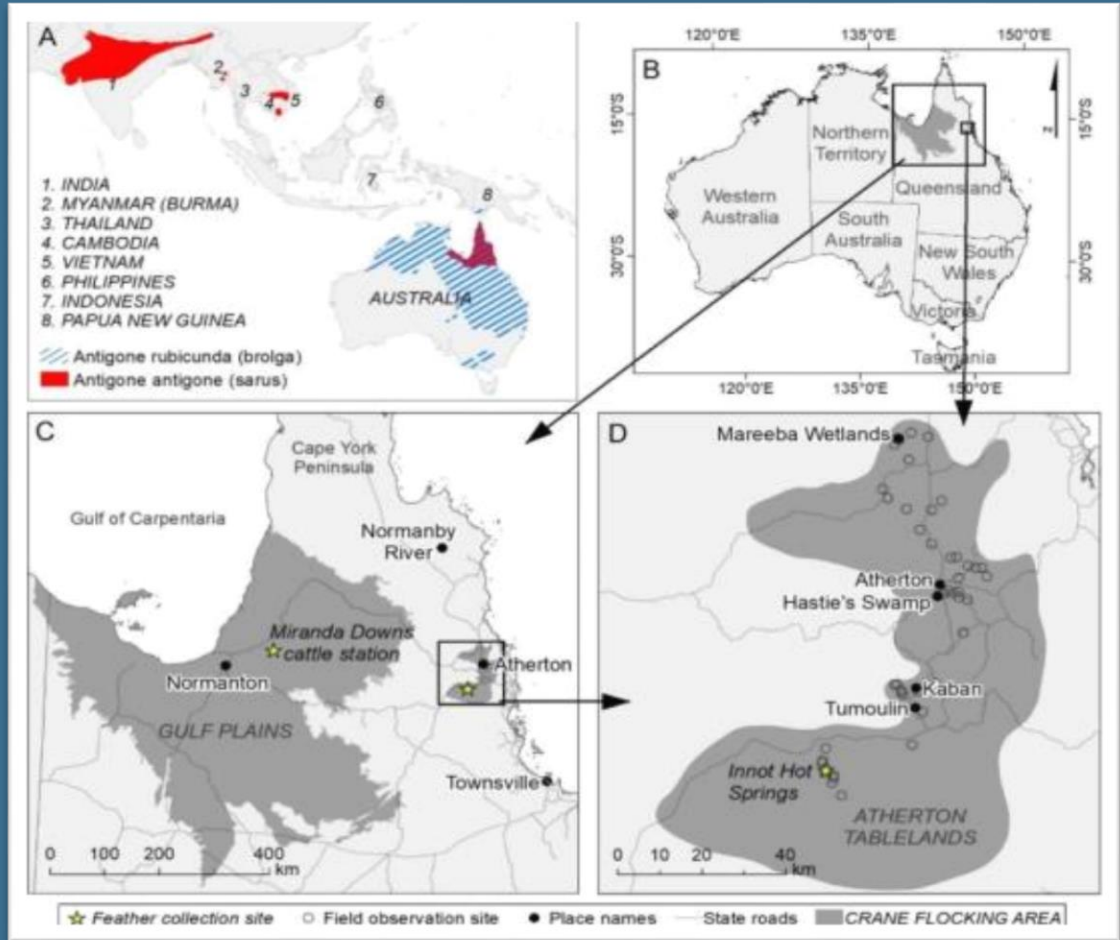


**Brolga** *Antigone rubicunda*



**Australian Sarus Crane** *A. a. gillae*

(A) Brolga and Sarus Crane Distribution.  
(B, C & D) Field localities in Northern Queensland.  
*[after Nevard et al. (2020)]*



Australian  
Sarus  
Cranes at  
Bromfield  
Swamp.



© Juergen Freund

Brolgas in  
flight on  
the  
Atherton  
Tablelands



Australian  
Sarus Crane  
and chick; Gulf  
Plains  
breeding  
grounds.





Brolga and  
chick; Gulf  
Plains  
breeding  
grounds.



Brolga feeding chick with beetle larvae; Gulf Plains breeding grounds (fuelling up for their journey to the Atherton Tablelands).



Cranes on  
their  
Atherton  
Tablelands  
wintering  
grounds.



© Juergen Freund

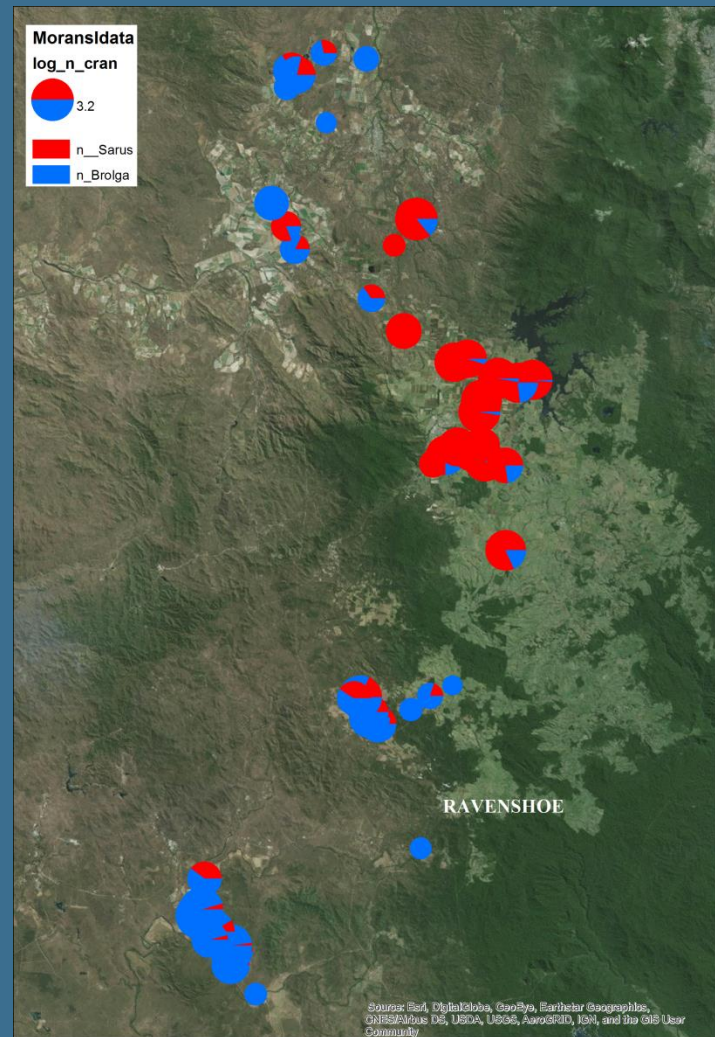
Sarus  
Cranes on  
their  
Atherton  
Tablelands  
wintering  
grounds.



Brolgas  
dancing on  
their  
Atherton  
Tablelands  
wintering  
grounds.



40,000 +  
observations of  
Brolgas (blue) and  
Sarus Cranes  
(red) at 46 localities  
on the Atherton  
Tablelands. [after  
*Nevard et al. (2020)*]



Bromfield  
Swamp  
crane roost  
at dawn

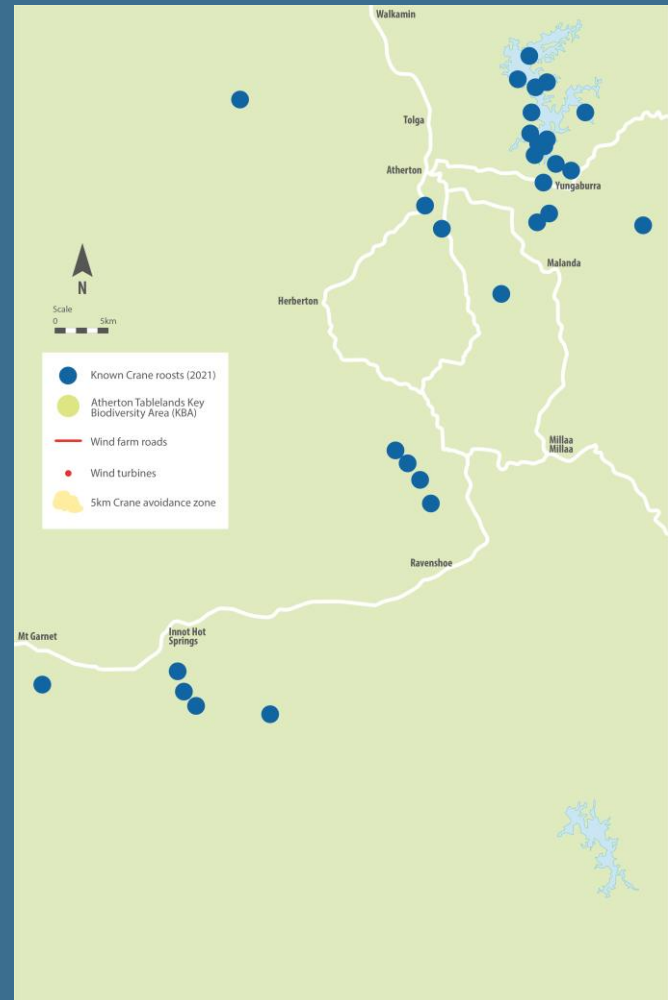


General  
Plains  
Swamp  
crane roost  
(proposed  
Chalumbin  
wind farm  
site in  
background)

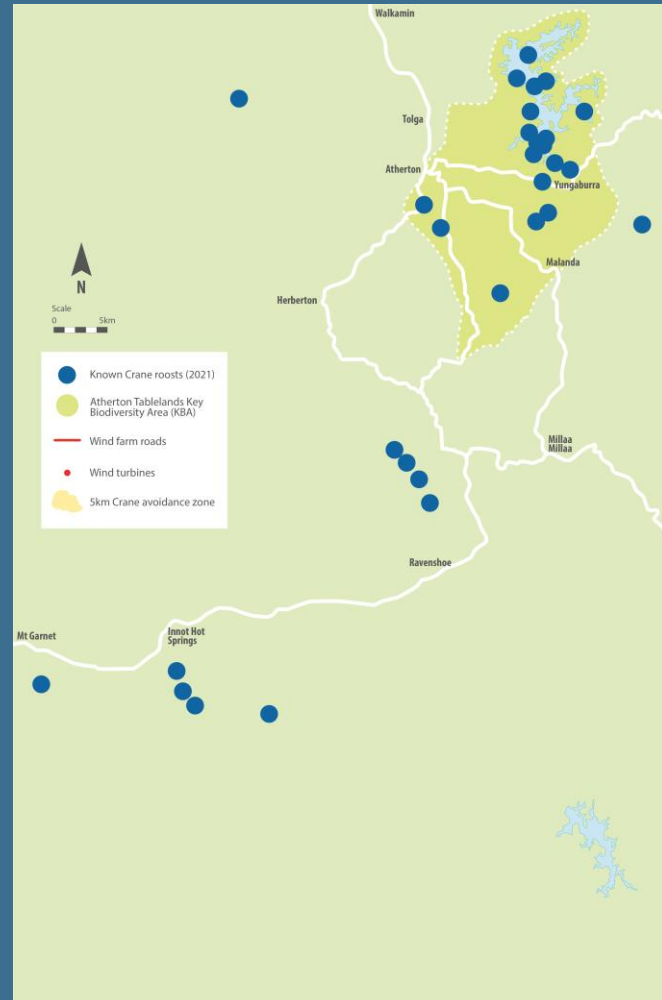




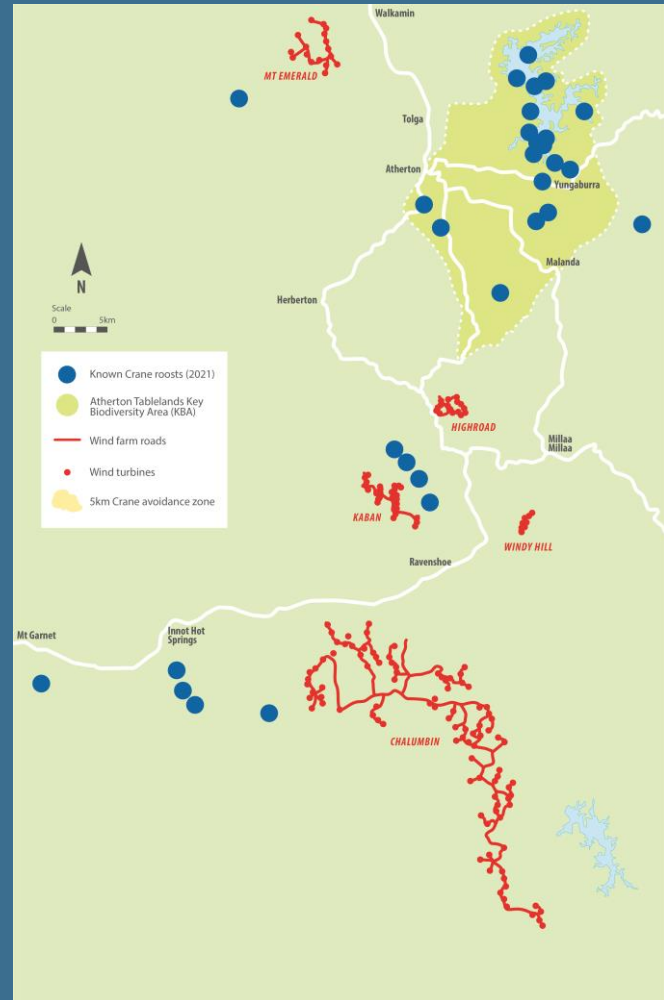
Known Crane Roosts  
on the central and  
southern Atherton  
Tablelands [after  
*Scambler et al. (2020)*  
and *Birdlife 2021*  
crane count].



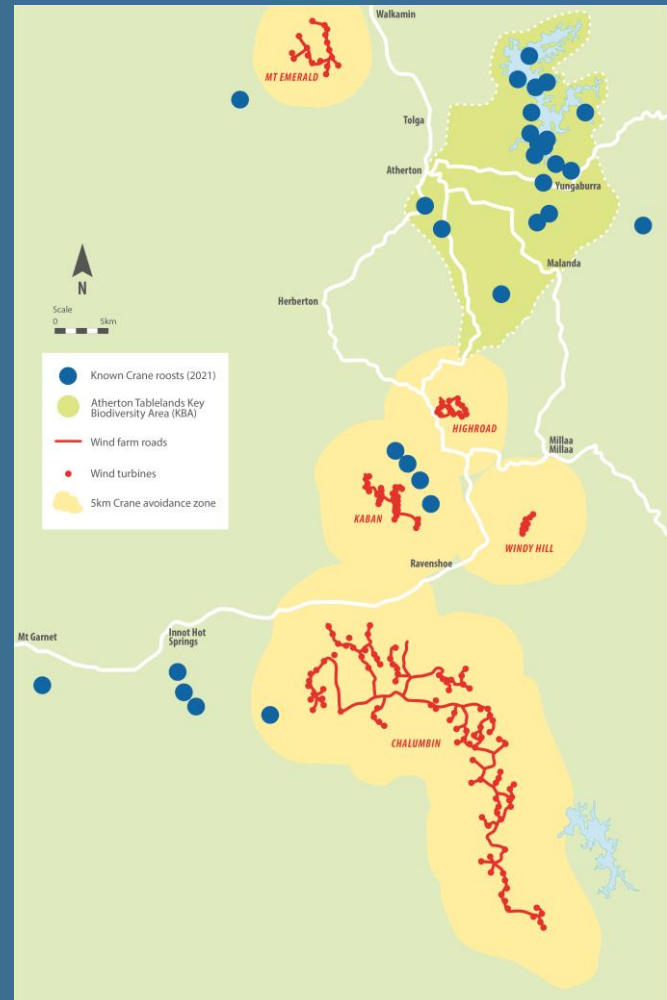
# Crane roosts and the Atherton Tablelands Key Biodiversity Area (KBA).



Crane roosts, KBA,  
existing and proposed  
wind infrastructure on  
the central and  
southern Atherton  
Tablelands.



Crane roosts, KBA, existing and proposed wind infrastructure and 5km 'crane avoidance zone' [after Pearce *et al.* (2021)] on the central and southern Atherton Tablelands.



Sarus Crane  
killed by  
collision with  
a power line  
in the central  
Atherton  
Tablelands.  
Nov 2021



**A FINAL WORD. “BIODIVERSITY HAS ALWAYS PROVIDED THE CRUCIAL BUFFER FOR LIFE ON EARTH, MITIGATING THE EFFECTS OF PREVIOUS CLIMATE CATASTROPHIES. CHOOSING BETWEEN NATURE AND WIND POWER IS THEREFORE NOT AN OPTION. TO SECURE THE FUTURE WE MUST HAVE BOTH. CARELESS DESTRUCTION OF BIODIVERSITY IN OUR TIME OF CLIMATE CHANGE CAN ONLY BRING ON MANY MORE PROBLEMS FOR FUTURE GENERATIONS...AND BADLY LOCATED RENEWABLE ENERGY PROJECTS SHOULD NOT BE OUR LEGACY.”**

**Dr Tim Nevard**